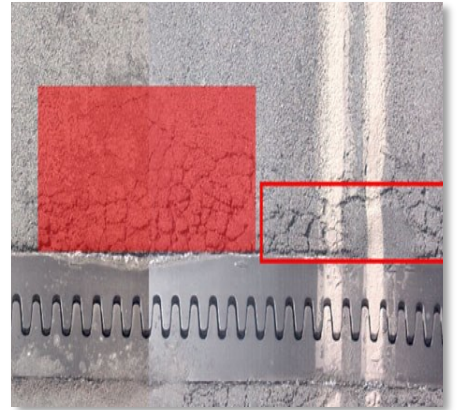


## What is JE Suite?

**JE Suite** is an editing and integration software that uses powerful techniques to identify structural deficiencies in a user-friendly environment while providing a convenient interface to conduct post-processing for line-camera data.

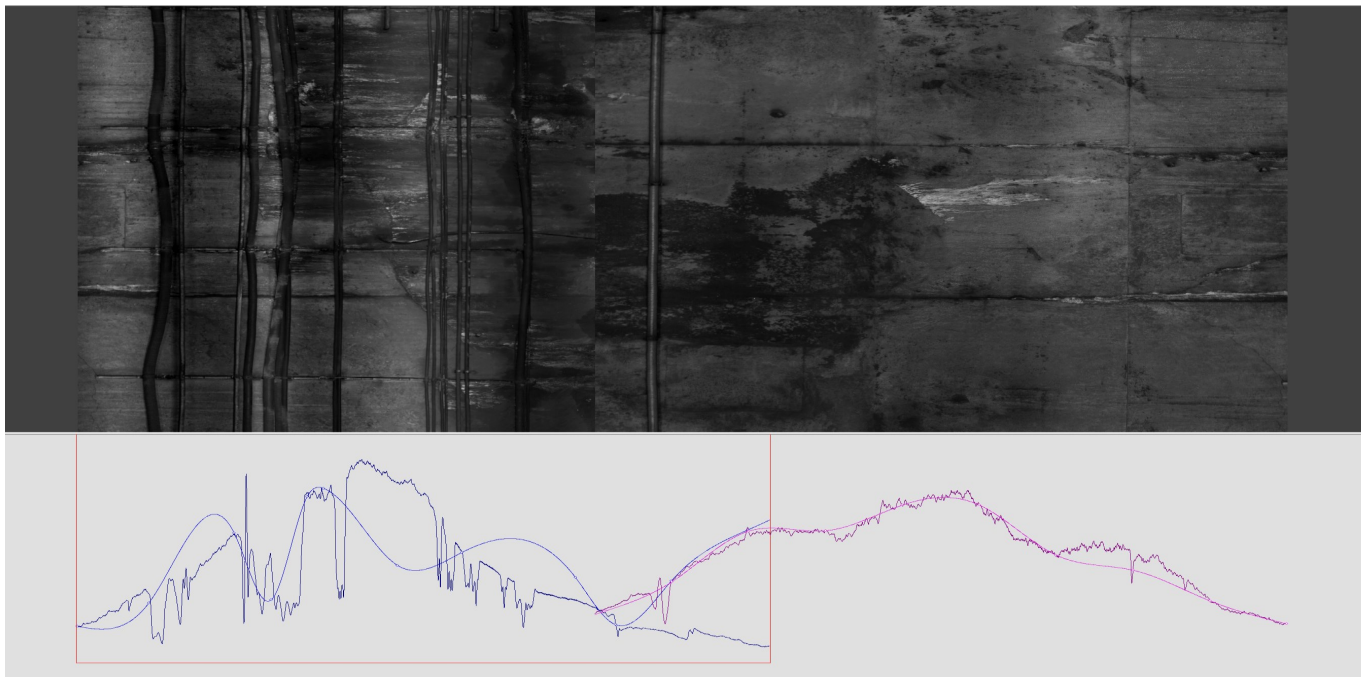






## Benefits of using JE Suite.

Users benefit from the combination of software available through JE Suite to collect and process line data. JE Integrator uses image correction and GPS data to orient images in order to streamline stitching processes. JE Editor software is a powerful tool that emphasizes structural deficiencies, making them easier to identify and label in reports. Output can be conveniently exported into a report, streamlining workflow.



## Accreditations

JE Suite has been used in NEXCO-West USA's applications in bridge deck scanning throughout more than 10 states in the USA.

+1 (703) 734 - 0281  
info@w-nexco-usa.com  
www.w-nexco-usa.com

NEXCO - West USA  
8300 Boone Blvd. Suite 260  
Vienna, VA 22182

